



Palėpė Sidnėjuje

Architektas – „Christopher Polly Architect“ (www.christopherpolly.com)
Vieta – Darling Pointas, Sidnėjus, Australija
Projekto plotas – 100 m²
Terasos plotas – 55 m²
Realizacija – 2011 m.
Fotografas – „Brett Boardman Photography“ (www.brettboardman.com)

KONTEKSTAS. Šie palėpės apartamentai įkurti prieplaukoje, rytinėje Sidnėjaus priemiesčių dalyje stovinčiame *Easthaven* name, pastatytame praėjusio amžiaus šeštojo dešimtmečio pabaigoje. Šiaurinėje apartamentų pusėje atsiveria vaizdas į Sidnėjaus prieplaukas, o rytinėje pusėje galima stebėti žavingą *Double Bay* paplūdimį bei *Point Piper* kvartalą.

KONCEPCINĖ STRUKTŪRA. Klientui buvo pateiktas pasiūlymas visiškai pertvarkyti bei pritaikyti individualiems poreikiams viršutiniame pastato aukšte esančius apartamen-

tus, praturtinti pojūčius tiek vidaus, tiek eksterjero erdvėse dvilypiu požiūriu:

plano konfigūracijoje aiškiai apibrėžti bendro naudojimo ir privačias erdves, paliekant galimybę tam tikras patalpas suskaidyti, praplėsti kitų patalpų sąskaita arba atskirti nuo kitos erdvės, taip užtikrinant unikalių erdvių konfigūracijų įvairovę;

sukurti stiprų fizinį ir vizualinį ryšį tarp interjero bei terasos, sustiprinti ryšius tarp svetainės, virtuvės bei terasos erdvių, iš kurių per miegamąjį šviesa nusidriekia iki vonios kambario, taip pat tiesiogiai sklinda per gyvenamąsias erdves. ►

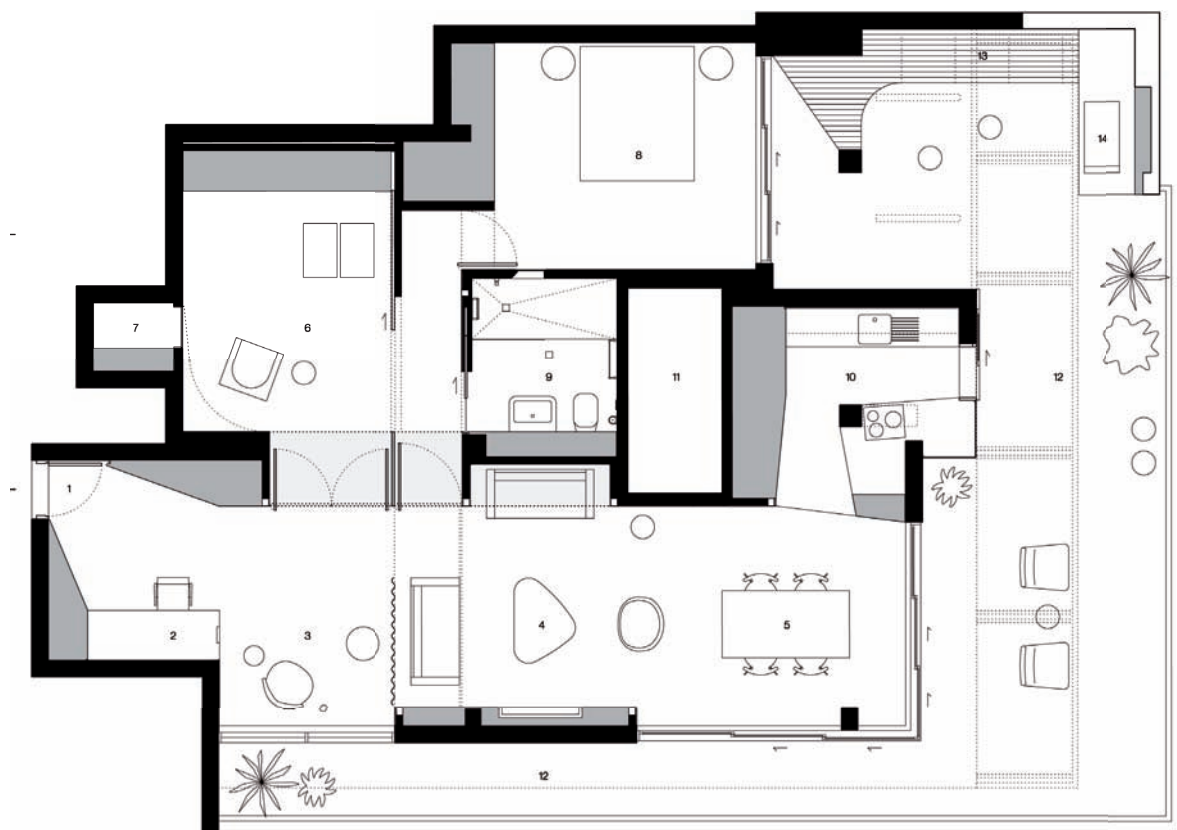


Pjūvis A

Pjūvis B

Palėpės planas:

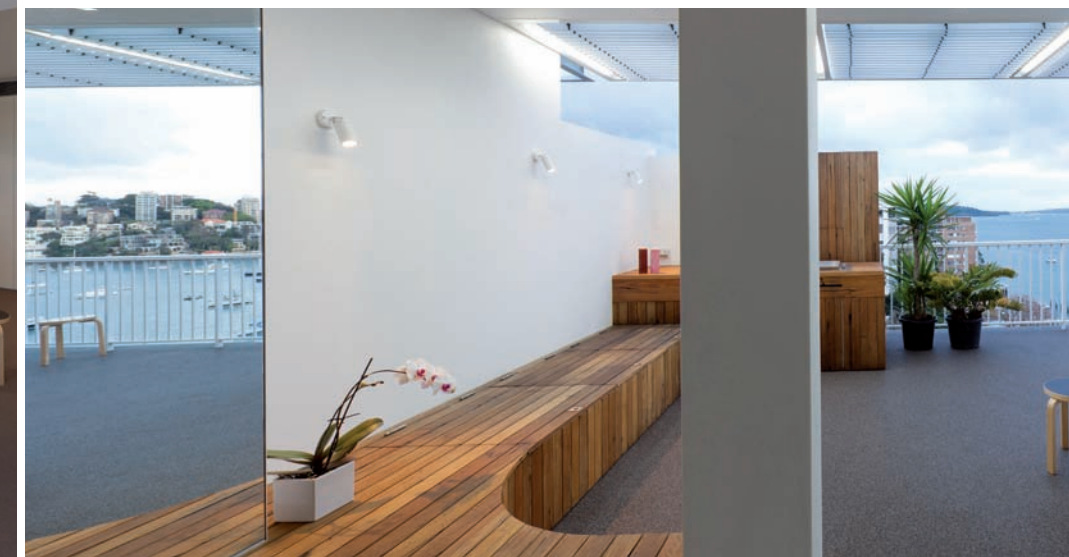
1. įėjimas; 2. darbo kambarys; 3. poilsio kambarys; 4. svetainė; 5. valgomasis; 6. svečių kambarys / svetainė; 7. vyno sandėliukas; 8. miegamasis; 9. vonios kambarys; 10. virtuvė; 11. inžineriniai tinklai; 12. terasa; 13. suolas / spintelės; 14. kepsninė.



INTERJERO SPRENDIMAI. Apartamentuose panaudota ilga stumdomų / slankiojančių sienelių sistema, kuri prasideda ties įėjimu ir baigiasi ties šiaurine terasa, gali būti sujungta į ištisinę sieną, sudarytą iš atskirų modulių. Besidriekdama išilgai visų patalpų ši mobili pertvara tarsi atlieka slenkščio tarp bendro naudojimo ir privačių patalpų vaidmenį. Vizualinis plano paprastumas yra suskaidytas lanksčios pertvaros tarsi punktyru, slepiančiu privačių patalpų, išdėdinti

to vonios kambario bei virtuvės konfigūracijų galimybes.

Plačios slankiojančios bei besivarstančios plokštės suteikia lankstumo privatų svečių kambarį praplečiant arba prijungiant prie gyvenamosios erdvės ir taip atveria kelius šviesai bei gerina ventilaciją, tuo pačiu vizualiai ir fiziškai pratęsia gyvenamąją erdvę. Nauja darbo bei poilsio zona, įrengta šalia įėjimo, atveria atpalaiduojančius vaizdus į prielauką. Ši zona gali būti vizualiai atskirta nuo gyvena-



mosios erdvės užuolaidų pertvara, kuri prireikus gali atskirti ar praplėsti patalpas.

Berėmis kampinis langas bei slankiojančios durys praplečia virtuvę į terasą, gerina šviesos tėkmę, ventilaciją bei priėjimą prie nepakartojamo vaizdo į prielauką, tuo pačiu žymiai praplečia funkcionalumą bei šios patalpos ryšį su terasa. Plieninio rėmo pavėsinė su integruotomis reguliuojamomis žaluzijomis bei apšvietimu tęsiasi per visą šiaurinę

pusę, suteikia apsaugą visiems šiauriniams langams, sustiprina patogumo jausmą bei galimybę gėrėtis terasa visais sezonais. Išorinė veidrodinė siena vakarinėje terasos pusėje atspindi prielaukos vaizdus stebint iš pagrindinio miegamojo, o linijškai iš medienos suręsta *barbekiu* zona bei žemi suoleliai su integruotomis sandėliavimo talpomis suteikia dar vieną erdvę papildomam gėrėjimuisi supančia aplinka bei atspindžiais. ▶



page: 40

Darling Point Penthouse

Architect: Christopher Polly Architect (www.christopherpolly.com)

Location: Darling Point, Sydney, Australia

Project Area: 100 sqm

Terrace Area: 55 sqm

Project Year: 2011

Photography: Brett Boardman Photography (www.brettboardman.com)

Context - The penthouse apartment is located in a harbourside eastern suburb of Sydney within the Easthaven building originally designed by Ancher Mortlock & Murray in the late 1950's, with views of Sydney Harbour to the north and Double Bay and Point Piper to the east.

Conceptual Framework - The proposal involves a complete, customized re-design of a top floor penthouse to enrich the amenity to all interior and exterior spaces by way of a two-fold approach:

the clear delineation of the public and private domains in the plan arrangement that simultaneously enables particular spaces to flexibly borrow from, expand into or contract from other spaces as required to offer a variety of unique spatial configurations;

the strong physical and visual connections of spaces to the terrace to enhance the amenity of, and relationships between, the living, kitchen and terrace areas, that also encompasses a link of borrowed light through a bedroom to an internal bathroom and overriding strategy of fully integrated lighting and storage.

Program Resolution - A long joinery device commencing at the entry and culminating at the northern terrace is employed as a means of unifying disparate wall alignments along the entire length of the apartment within the public domain - ultimately serving as the key threshold between the public and private areas of the plan. Its visually planar quality is punctuated by pivoting panels, recesses and apertures that lead to a reconfigured private domain of rooms, new enlarged bathroom and new kitchen respectively. Large sliding and pivoting panels flexibly enable the private guest room to expand into and form part of the public living area to gain access to light and ventilation, thereby visually and physically expanding the living area into the depth of the plan. A new study and sitting area are inserted near the entry, permitting access to alternative contemplative views of the harbour which can be visually demarcated from the main living areas by a retractable curtain to flexibly contract or enlarge the living areas as required.

the sun.

A salient detail is that a large oak has been planted in the patio of the house. This makes it seem as if the house has detached itself from the edge of the woods to move into the open space in full view of the sun. Like the floor of the house the hard landscaping - entrance, parking and terraces - consists of large slabs of helicoptered concrete so that house and garden, inside and outside, flow one into the other as if it were the most natural thing.

Villa 4.0 took two years to design and build and has now been appropriated by the client.

A frameless corner window and glass sliding door expand the new kitchen into the terrace, improving solar access, ventilation and access to principal views of the harbour, while vastly enhancing the function and relationship of this room to the terrace. A steel framed pergola with integrated adjustable louvres and lighting extends along the entire northern length, providing protection in this exposed orientation for all northern glazing, while increasing the amenity and function of the terrace for enjoyment in all seasons. An external mirrored wall at the western end of the terrace enables reflected views of the harbour from within the main bedroom, while a timber lined bbq area and low built-in benches with integrated outdoor storage provide a sheltered space for alternative enjoyment of views and contemplative reflection.

Sustainability - Significant parts of the of the existing structure and walls were consciously retained, assisting to reduce the carbon footprint by way of retaining the embodied energy within the existing fabric. Use was made of recycled Blackbutt timber externally and internally; high-performance grey toned glazing to reduce heat loads; external louvred pergola to control northern solar access and heat gain and to improve usability of the terrace; substantial wall and ceiling thermal & acoustic insulation; 100% natural rubber to the kitchen and entry vestibule floor areas; energy efficient light fittings & appliances and water-saving sanitary and tap fittings.

page: 46

On the Rooftop

Project: Penthouses and Rooftop terrace

Project team: JDS Architects (Julien de Smedt, Jeppe Ecklon and the team)

Size: 900 m²

Budget: 950 000 EUR

Location: Copenhagen, Denmark

Status: Completed 2011

Project Description:

Optimization and utilization of the city roof.

Elmegade district is probably one of the most densely populated areas of inner Nørrebro, CPH. Especially the triangular block Birkegade / Egegade / Elmegade has a very high density, which is reflected in very narrow courtyards.

And it is precisely around the cramped courtyard that the concept for BIR originates. The driving concept is to create the 'missing garden' at the top of the existing housing block in association with 3 new penthouses, so all residents gain access to a genuine outdoor garden. In order to qualify 'the missing garden', JDSA looked at the Copenhagen gardens, which characteristically has an associated functionality. Therefore, a rooftop garden is designed as a space of functions and an associated materiality. This is reflected in a playground with shock-absorbing surface and a playful suspension bridge, a green hill with varying accommodation backed by real grass and durant vegetation, a viewing platform, an outdoor kitchen and barbecue, and a more quiet wood deck.

The concept for the BIR, is to optimize and fully exploit the situations the site has to offer, and thereby design a potential for the future exploitation of the roof to the delight of all the co-op's residents. It is a concept which is not limited to establish the 3 new apartments, but a concept which both creates a use-

ful roof garden as well as a beautiful landscape for the co-op's neighbours and city residents in general.

Usually a roof defines a final measure of any construction – closure. In the near future the Birkegade roof will open up for a versatile stay and experience.

page: 54

Interior Innovation Award at imm cologne 2012

The Interior Innovation Award is one of the most prestigious awards of the furnishing sector world-wide and was launched in 2002 by the imm cologne, which provides the idea behind the competition. The organiser is the German Design Council. Through this competition the imm cologne and the German Design Council have succeeded in creating an effective tool for corporate positioning and product differentiation for the interior furnishing market. The Interior Innovation Award appraises top innovations in all product areas of this industry sector. All businesses may enter for the Interior Innovation Award as far as their products are listed in the following product categories: Furniture, Bathroom, Office/Workplace, Building fixtures, Walls/Floors/Ceilings, Kitchen/Household, Lighting, Textiles

1. Title: 25

Manufacturer: Desalto

Design: Bruno Fattorini & Partners

25, an archetypal table, absolutely essential, designed by Bruno Fattorini and Partners. 25, which refers to the consistently slim thickness of the top and leg, which is, needless to say, 25 mm. It is perhaps the longest table ever made with an industrial process, capable of reaching 3.50 metres in length with a constant thickness of 25 mm. Almost invisible to the gaze, it has excellent resistance, all hidden within the sandwich of materials, including aluminium and carbon, with which it is built. It does not flex under the weight, even if it is so thin. An avant-garde table, absolute abstraction of form, latest generation materials. Very Desalto.

2. Title: Axor Bouroullec

Manufacturer: Hansgrohe AG

Design: Ronan & Erwan Bouroullec Axor Bouroullec

The designers Ronan and Erwan Bouroullec have now combated this dictatorship in bathrooms. "We trust in people's creativity; in their ability to optimally shape rooms in line with their needs and desires rather than just to be given a fixed design", explained Erwan Bouroullec. The two brothers worked with Axor, the Hansgrohe AG designer brand, to develop an open system: the Axor Bouroullec bathroom collection lets users choose which of the around 80 elements they want to combine and which of the spacious shelves, which are either integrated into the wash basin or separately available, they want to use to do this. For example, to place the mixer on if that is an expedient and desirable solution for them.

3. Title: Bend

Manufacturer: MDF Italia



TVARUMAS. Didžioji dalis seniau egzistavusios struktūros buvo specialiai palikta, taip prisidedant prie anglies emisijos mažinimo, kadangi jau egzistuojančioms medžiagoms pagaminti sunaudota energija lieka neiššvaistyta. Taip pat buvo panaudota vietinė perdirbta mediena tiek išorėje, tiek apartamentų viduje; aukšto efektyvumo pilko atspalvio langai, sumažinantys šiluminį krūvį; išorinė pavėsinė su žaliuzėmis, skirta kontroliuoti saulės šviesos bei šilumos srautui iš šiaurinės pusės ir terasai praplėsti; efektyvi sienų ir lubų termoakustinė izoliacija; 100 % guminė grindų danga virtuvėje bei koridoriuje; energiją taupanti apšvietimo įranga bei buitinė technika, vandenį tausojanti santechnikos įranga bei maišytuvai.