



FACT FILE

THE BRIEF

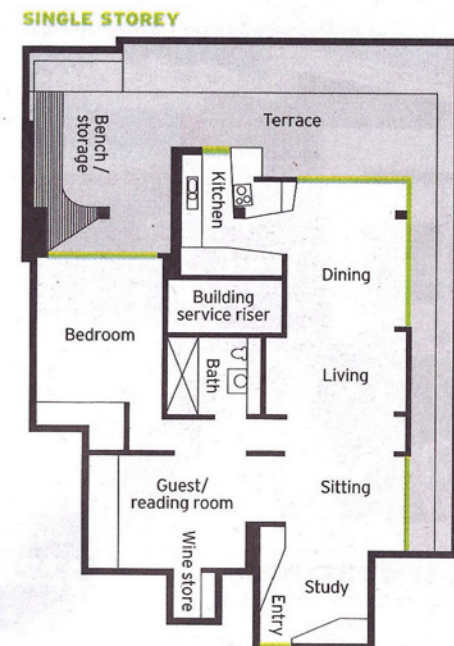
To rejuvenate the bathroom, kitchen and living areas of an apartment with flexible design to open or close areas off as needed

THE ARCHITECT

Christopher Polly



"We installed a frameless corner window and glass sliding door, which expanded the new kitchen into the terrace"



A The wraparound terrace has fantastic harbour views **B** Joinery acts as a divider between bedrooms and the entertaining areas **C** A new study and sitting area was created **D** Panels provide privacy **E** Creative design was essential for the new kitchen **F** There is plenty of storage space **G** The new bathroom features inexpensive tiling **H** Main bedroom has reflected water views **I** A new cover was installed making the terrace useable

Turning pokey into perfect

Transforming a 1950s penthouse with harbour views into a modern apartment required creative designing, writes **Ben Pike**

When the owners of an eastern suburbs penthouse in a 1950s block wanted a modern redesign, architect Christopher Polly knew he had a challenge.

The husband and wife clients were looking to turn their guest bedroom into an entertaining area and make alterations to the pokey kitchen and bathroom.

Blessed with stunning views of waters surrounding Darling Point, there was also a need to improve the unprotected and uneven outside area that wraps around half the 100sq m apartment.

Completed in April 2011, the result has

recently been entered into the Institute of Architects Awards.

Penned in

The fixed location of water services and a central building amenities column that runs throughout the whole building meant Christopher had to think creatively when improving the kitchen and bathroom.

"We installed a frameless corner window and glass sliding door, which expanded the new kitchen into the terrace," he says.

"This improved solar access, ventilation and access to principal views of the Harbour, while vastly enhancing the

function and relationship of this room to the terrace. In the bathroom we used an inexpensive dark grey tile to provide a cocoon-like quality."

The spine

One of the most interesting new design elements in this property is the central joinery that runs from the entry to the northern part of the outside terrace.

As well as being a storage device, the joinery acts as a divider between the main and guest bedrooms on one side and the dining and entertaining areas on the other.

"It was a way of unifying a space where

there is a recess for a sofa and an opening into the kitchen itself," Christopher says.

"Visually it is on one plane but is punctuated by pivoting panels, recesses and apertures that lead to a reconfigured private domain of rooms."

As part of the internal fit-out, a new study and sitting area were inserted near the entry, divided by a retractable curtain to shrink or enlarge the living areas.

Terrace troubles

The old 55sq m of outside space did not have any cover and was rarely used. It was also unattractively and unevenly tiled, and

had a habit of falling in different directions, resulting in drainage issues.

Christopher had Quartz Carpet installed on the floor outside, a slip-resistant product combining natural quartz granules with an epoxy resin.

"We did not want to put in any supporting columns and had no way of hanging the new cover from above, so it had to spring out directly from the slab," he says. "The width of the new pergola was also limited by the body corporate."

"We ended up installing a steel-framed pergola with integrated adjustable louvers and lighting, which extends along the entire northern length."

"This provides protection in this exposed orientation for all northern glazing, while increasing the amenity and function of the terrace for enjoyment in all seasons."

Christopher adds that even when it is lightly drizzling the owners can still sit outside in comfort. There is an external mirrored wall at the western end of the

terrace allowing for reflected views of the Harbour from within the main bedroom. "Outside there is also a timber-lined barbecue area and low built-in benches with integrated outdoor storage, which provides a sheltered space for enjoyment of the views," he says.

Sustainability

Reducing the home's carbon footprint was also a concern so recycled blackbutt timber was used, wall and ceiling acoustic insulation inserted and 100 per cent natural rubber was laid in the kitchen and vestibule floor areas.

Energy-efficient light fittings and appliances and water-saving tap fittings were also part of the renovation. ■ pikab@dailylelgraph.com.au

MORE INFORMATION
Christopher Polly Architect
christopherpolly.com



PHOTOS: BRETT BOARDMAN PHOTOGRAPHY